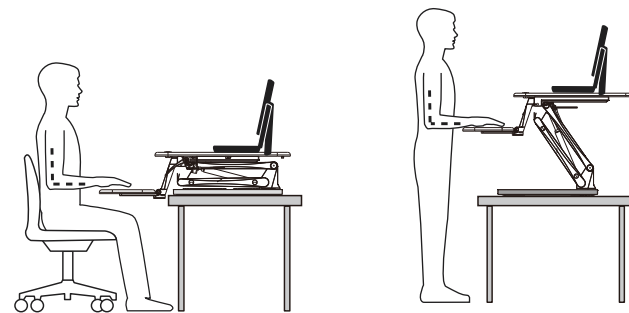


euroseats

Item No. : **14.WVH.001**

Installation guide



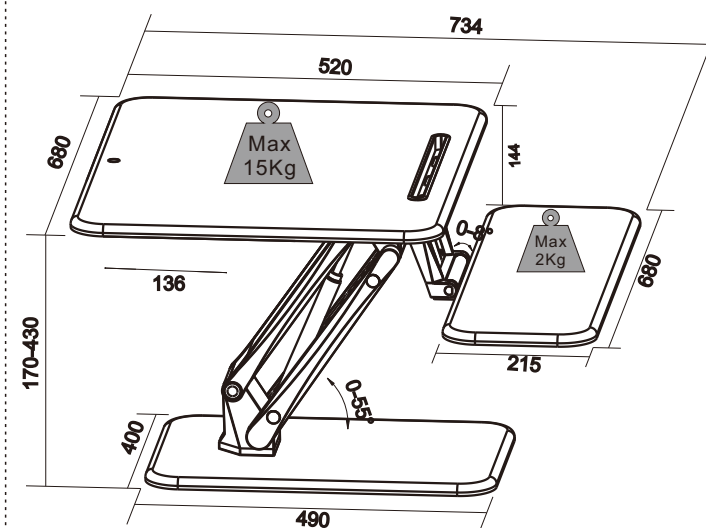
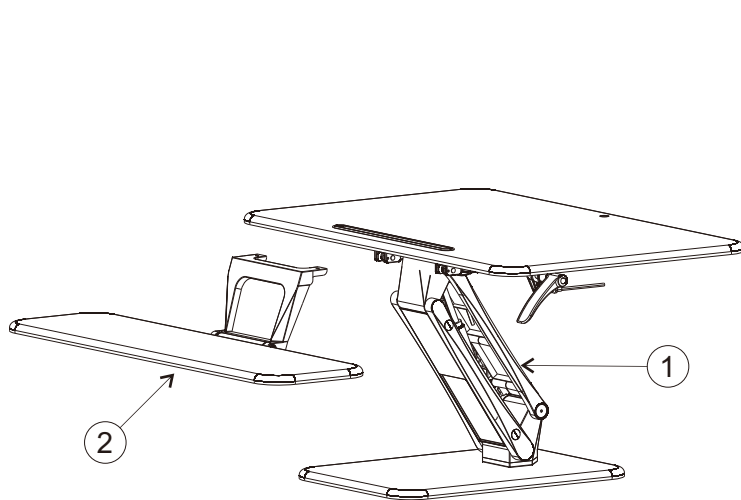
Technical Data

Desktop load-bearing:	Max:15KG
Keyboard tray load-bearing:	Max:2KG
Height range:	170-430mm

Accessory Package List

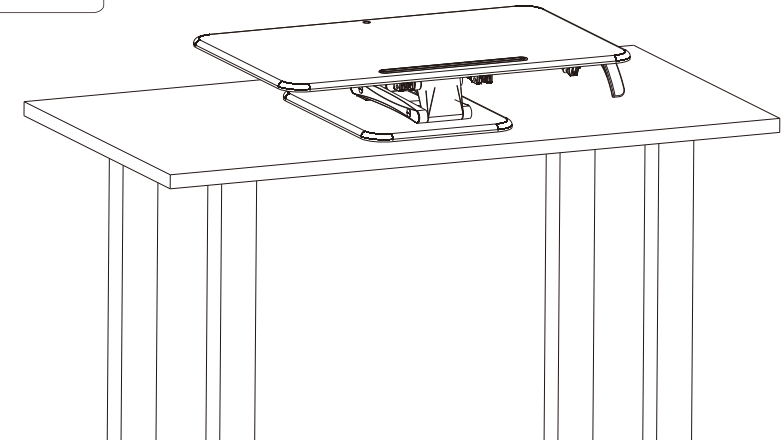
Note: The drawings below are only for reference and may be slightly different with the object, please in kind prevail. Any tool missing or installation problem, please contact the customer service freely.

No.	Spare part	Qty.	No.	Spare part	Qty.	No.	Spare part
①	Main structure	1	②	Keyboard tray	1	③	x4 A x2 B Sticker

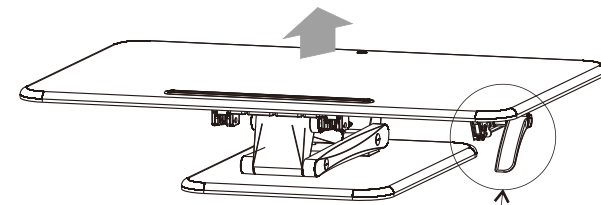


ASSEMBLY STEP 1

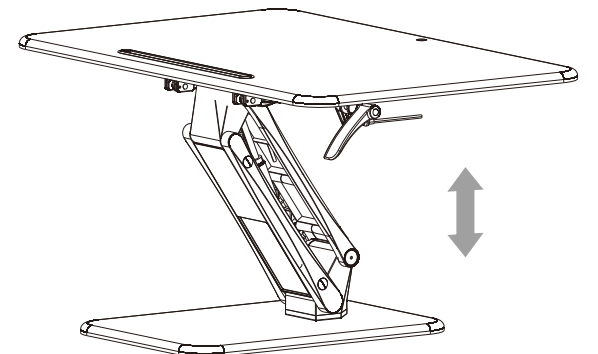
Put the product on the desk



ASSEMBLY STEP 2



Bracket will bounce promptly when the handle is pressed
Caution!



ASSEMBLY STEP 3

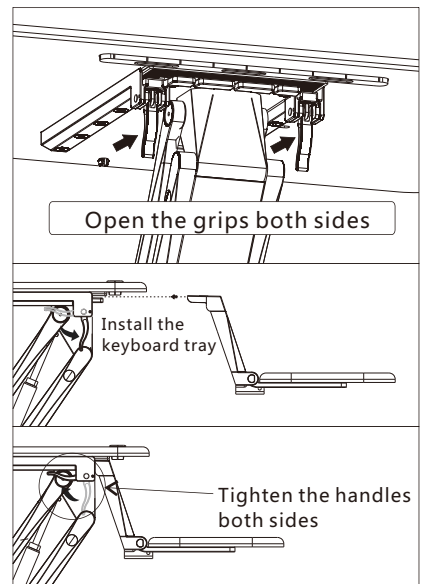
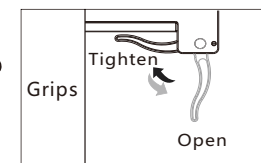
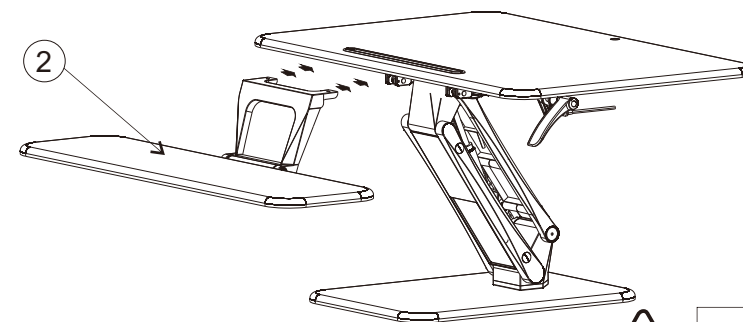
Install the keyboard tray in the main structure

1

2

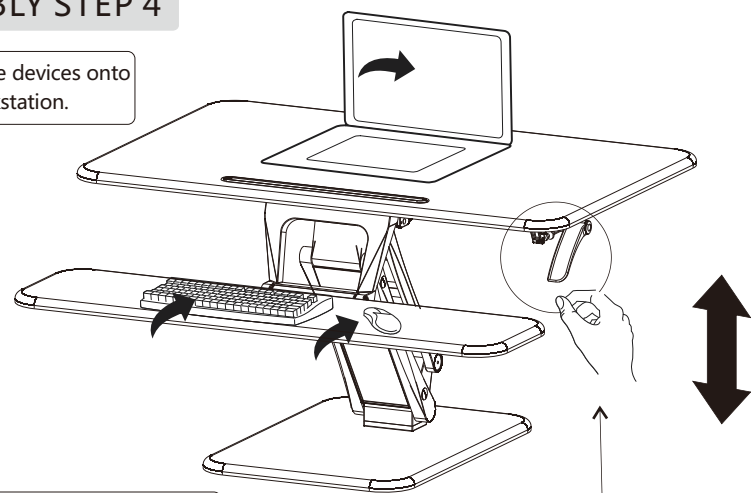


Please assemble or disassemble the tray based on the actual usage.



ASSEMBLY STEP 4

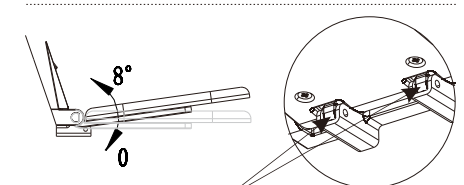
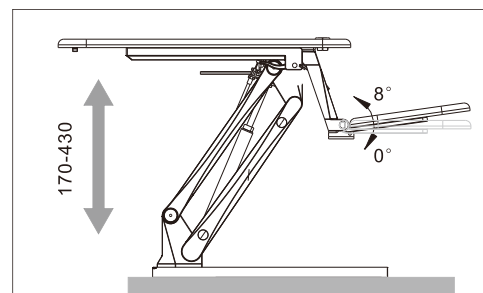
Please place the devices onto the top of workstation.



To operate the workstation, press the handle and raise or lower the top to desired height



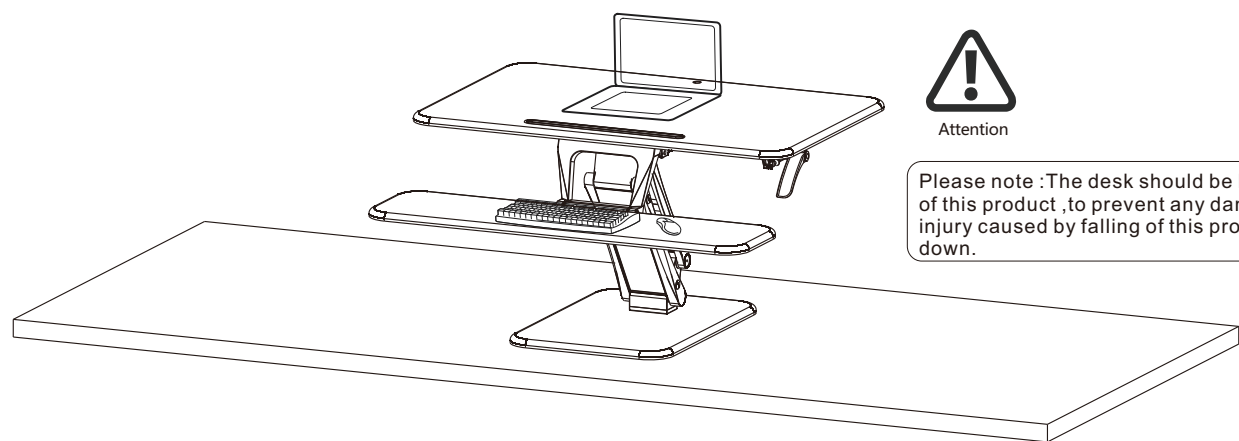
Please make sure all installed equipments are on the table, and not sticking out of the edge, or it may harm or cause damage.



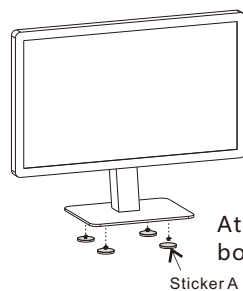
Adjusting method: move the adjustment block, adjust the tray angle



Please note :The desk should be bigger than the base of this product ,to prevent any damage or personal injury caused by falling of this product while it up and down.



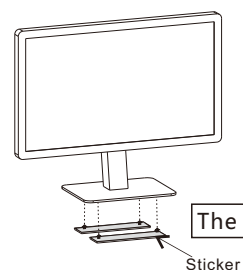
A



The stickers can be reused by clean water

Attach the sticker to the bottom of monitor

B



The sticker B can be cut as you wish

Sticker B

⚠ WARNING

Hands Pinching

Do not place your hand near the strut. Strut's angle will change during the desktop lifts and it may hurt you.



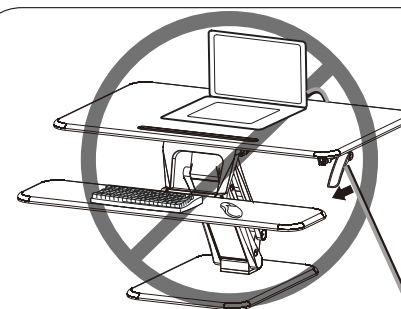
Warning

Please do not put hands near the supporting bars, as they change during adjusting and may hurt you.



Attention

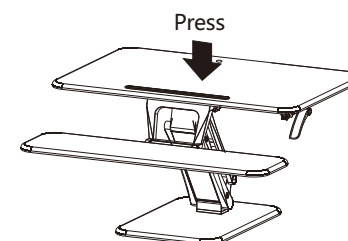
Please make sure all installed equipments are on the table, and not sticking out of the edge, or it may harm or cause damage.



Attention

Please leave enough length of cable for height adjustment function, otherwise it may cause unexpected lost.

Cables



Press



Warning

Please press the grips to give the desktop downward force when you need to adjust the height while the object on the table is less than 3kg, in order to prevent the tabletop bouncing promptly and any property loss or personal injury.



Warning

This product contains small items that could be a choking hazard if swallowed. Keep these items away from young children.

- Make sure these instructions are read and completely understood before attempting installation. If you are unsure of any part of this installation, please contact a professional installer for assistance.
- Safety gear and proper tools must be used. A minimum of two people are required for this installation. Failure to use safety gear can result in property damage, serious injury or death.
- Please check joint parts every two months, making sure the screws are loosened or not.

Note: this product is intended for indoor use only. Use of this product outdoors could lead to product failure or personal injury.